

TECTUM Acoustical Walls

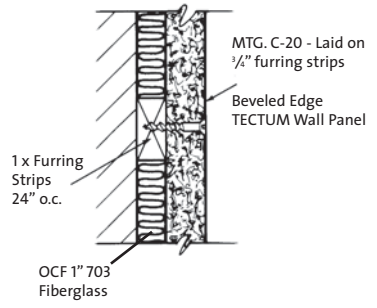
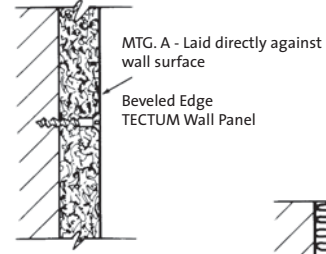
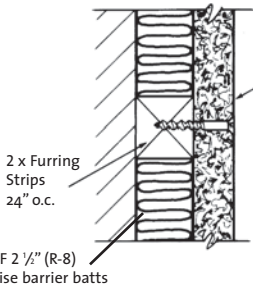
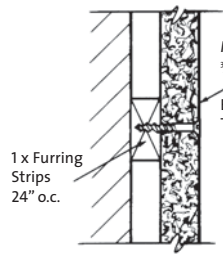
Tectum Interior Wall Panels offer an effective, permanent and attractive solution for any kind of activity that produces undesirable noise levels within an enclosed space. They are abuse resistant and are able to withstand the impact of thrown or kicked balls in gyms, yet are lightweight.

Tectum acoustical wall panels are easy to install in new construction and in existing buildings for effective sound control. Up to 1.00 NRC can be achieved. Furring strips installed horizontally (when using vertical panels) are recommended and should be a maximum of 24" o.c. when using 1" thick panels.

SIZES, FINISHES

Tectum Interior Wall Panels are available 1", 1 1/2" and 2" thick in widths of 23 3/4", 31 3/4" and 47 3/4" with long edges beveled. 1 1/2" and 2" panels are also available with T&G edges in widths of 23", 31" and 47" for interlocking continuous paneling. All panels are available in 48" - 144" lengths and are field machinable.

Factory finish is in natural, painted white or custom colors and can easily be field painted without losing their acoustical efficiency.



TECTUM ACOUSTICAL PERFORMANCE

TECTUM WALL PANELS

SOUND ABSORPTION COEFFICIENTS

Panel Type	125	250	500	1000	2000	4000	NRC	Mounting
1"	.06	.13	.24	.45	.82	.64	.40	A
1"	.07	.15	.36	.65	.71	.81	.45	D-20
1"	.16	.43	1.00	1.05	.79	.98	.80	C-20
1"	.32	.70	1.09	.93	.76	.94	.85	C-40
1 1/2"	.07	.22	.48	.82	.64	.96	.55	A
1 1/2"	.15	.26	.62	.83	.70	.91	.60	D-20
1 1/2"	.24	.57	1.17	.87	.93	.87	.90	C-20
1 1/2"	.40	.84	1.18	.84	.94	.88	.95	C-40
2"	.15	.26	.62	.94	.62	.92	.60	A
2"	.15	.36	.74	.82	.82	.92	.70	D-20
2"	.24	.67	1.14	.87	1.06	.96	.95	C-20
2"	.42	.89	1.19	.85	1.08	.94	1.00	C-40

TECTUM PRODUCT

Panel Type	Nominal Thickness (inches)	Actual Size (inches)	Edge Detail	Factory Finish	Light Reflectance	Flame Spread	Weight LBS/SF		
							1"	1 1/2"	2"
Standard Tectum Interior Panels	1, 1 1/2, 2	Widths: 23 3/4, 31 3/4, 47 3/4 Lengths: 48 to 144	Long Edges Beveled	White, Natural, Custom Colors	.75 / .60	0-25	1.63	2.53	3.3
	1 1/2, 2	Widths: 23, 31, 47 Lengths: 48 to 144	T&G Edges Square Ends	White, Natural, Custom Colors	.75 / .60	0-25		2.53	3.3
Kerfed Wall Panels	1	Width: 23 3/4 Length: 48 to 144	BKR, Bevel, Kerfed, Rabbeted Square Ends	White, Natural, Custom Colors	.75 / .60	0-25	1.63		
V-line Interior Panels	1, 1 1/2, 2	Widths: 23 3/4, 31 3/4, 47 3/4 Lengths: 48 up to 144	Long Edges Beveled	White, Natural, Custom Colors	.75 / .60	0-25	1.63	2.53	3.3

ENVIRONMENTAL INFORMATION

The wood fibers (excelsior) used in Tectum panels come from Wisconsin Aspen trees. The Wisconsin Aspen is a self-propagating type tree. When cut, a new tree will begin to grow back from its root structure. In addition, all Wisconsin Aspen used for Tectum is air-dried. No drying kilns are used. The wood is stored in ranks to age naturally. No chemicals are used in the production of any excelsior purchased by Tectum Inc.

All excelsior used in Tectum products comes from a single source that is affiliated with both the Forest Stewardship Council (FSC) and the Sustainable Forestry Initiatives (SFI) programs. These programs are a comprehensive system of objectives and performance measures that integrate the perpetual growing and harvesting of trees with the protection of wildlife, plants, soil and water quality. All loggers are trained to adhere to FSC and SFI principles.

Magnesium oxide is mixed with magnesium sulfate (Epsom salts) to form the primary binder. The magnesium sulfate solution has

been manufactured on site by reclaiming waste materials since production began in 1949. The secondary binder is composed of sodium silicate and calcium carbonate (limestone). All of the water used in the manufacture of Tectum is captured and recycled.

TECTUM PRODUCTS AND LEED

Tectum Inc. fully endorses the LEED Green Building Rating System.

Our products may contribute to the following LEED credit areas:

EA Prerequisite 2: Minimum Energy Performance

EA Credit 1: Optimized Energy Performance

MR Credit 2: Construction Site Waste Management

MR Credit 4: Recycled Content

MR Credit 5: Regional Materials

MR Credit 6: Rapidly Renewable Resources

MR Credit 7: Certified Wood

EQ Prerequisite 3 (LEED for Schools): Minimum Acoustical Performance

EQ Credit 3.1 and 3.2: Construction IAQ Plans

EQ Credit 4.1: Low-Emitting Materials, Adhesives and Sealants

EQ Credit 4.4: Low-Emitting Materials, Composite Wood & Agrifiber Products

EQ Credit 10 (LEED for Schools): Mold Prevention

EQ Credit 11 (LEED for Schools): Low-Impact Cleaning and Maintenance Equipment Policy
ID Credit 1: Innovation in Design

Tectum products are listed in the GreenSpec Directory** published by Building Green from the editors of Environmental Building News.

For complete information about Tectum products and LEED, please see our Marketing Bulletins M-81 (Tectum Products and LEED Certification) and M-83 (Tectum Products and LEED Q & A) or our Environmental Statement. All of these materials are available online at www.tectum.com/leed.